

Definitive Cultural Tour of Bhutan with Punakha Tsechu

A wonderful, easy-paced tour designed to get 'under the surface' of Bhutanese culture.



Group departures

See overleaf for departure dates

Holiday overview

Style	Tour
Accommodation	Hotels
Grade	Tour
Duration	14 days from London to London
Min/Max group size	4 / 12. Guaranteed to run for 4
Trip Leader	Local Leader Bhutan
Land only	Joining in Kathmandu, Nepal
Max altitude	3,420m/11,221ft, Pele La, Day 7

Private Departures & Tailor Made itineraries available



Watch related videos online: [Definitive Cultural Tour of Bhutan](#)

tel: +44 (0)1453 844400 fax: +44 (0)1453 844422 info@mountainkingdoms.com www.mountainkingdoms.com

Mountain Kingdoms Ltd, 20 Long Street, Wotton-under-Edge, Gloucestershire GL12 7BT UK
Managing Director: Steven Berry. Registered in England No. 2118433. VAT No. 496 6511 08

Departures

Group departures

2025 Dates:

Sun 02 Mar - Sat 15 Mar	With Punakha Tsechu
Wed 09 Apr - Mon 21 Apr	With Paro Tsechu
Mon 29 Sep - Sat 11 Oct	With Thimphu Tsechu
Tue 04 Nov - Mon 17 Nov	With Black-necked Crane Festival

This detailed itinerary is for our March 2025 departure only. Itineraries for all other departures can be downloaded from our website or requested from the Mountain Kingdoms office.

Will the trip run?

This trip is guaranteed to run for 4 people and for a maximum of 12. In the rare event that we cancel a holiday, we will refund you in full and give you at least 6 weeks warning. Many trips do fill up quickly - we advise you to book early if you want to secure a place(s) on the dates of your choice.

Group prices and optional supplements

Please contact us on +44 (0)1453 844400 or visit our website for our land only and flight inclusive prices and single supplement options.

No Surcharge Guarantee

The flight inclusive or land only price will be confirmed to you at the time you make your booking. There will be no surcharges after your booking has been confirmed.

Insurance

We offer a travel insurance scheme - please contact us for details.

Private Departures

We can also offer this trip as a private holiday. A Private Departure follows exactly the same itinerary as the group departure but at dates to suit you (subject to availability) - please contact us with your preferred dates.

Tailor Made service

We pride ourselves on the level of quality and choice we provide for our clients who want a fully tailor made holiday. A holiday will be created especially for you by one of our well-travelled experts. They will be able to advise on the accommodation best suited to your needs, the sights you should visit (and those to avoid!) and the best walks and activities matched to your ability. In short, we will work together with you to create your perfect holiday. If you would like to explore the idea of a Tailor Made holiday with Mountain Kingdoms then please call us on (0)1453 844400 or see the Tailor Made pages of our website for further inspiration.

Special notes

Flights between Kathmandu and Paro

Please note that there is the small possibility that flight schedules between Kathmandu and Paro could change in the coming months. This may result in alterations to the itinerary and/or the dates of travel.

Your guide



You will have an English-speaking Bhutanese guide to lead your trip. Mountain Kingdoms have been working with the same partner in Bhutan since 1986 and their guides are some of the best in the Kingdom. They speak good English, as this is taught in all Bhutanese schools, and are fully qualified guides. The Tourism Authority of Bhutan insists that a Bhutanese trek or tour leader must pass his/her guiding exams in Thimphu before accompanying groups of foreign visitors.

Your trip highlights

- Visit the key cultural sights including the Tiger's Nest Monastery and Punakha Dzong
- Enjoy a well-paced itinerary with ample time for in-depth exploration
- Visit picturesque villages and get under-the-skin of authentic Bhutanese life
- Join the celebrations at the colourful Punakha Tsechu
- Stay in good quality hotels throughout Bhutan and in Dwarika's unique heritage property in Kathmandu

At a glance itinerary

Days 1-3	Fly to Kathmandu. Fly to Paro. Sightseeing.
Days 4-5	Drive to Thimphu with visit to Tamchhog Lakhang en route. Sightseeing in Thimphu. Visit Wangditse Monastery.
Day 6	Drive to Punakha via the Dochu La, 3,140m/10,302ft. Visit Drukpa Kunley's Temple and villages.
Day 7	Drive to Gangtey. Visit Pele La and Gangtey Gompa. Optional afternoon walk.
Day 8	Drive to Punakha. Valley walk and visit dzong.
Day 9	Attend Punakha Tsechu.
Days 10-11	Drive to Paro. Visit Paro Dzong, Museum and Kyichu Lakhang. Walk to Taktsang Monastery
Days 12-14	Fly to Kathmandu. Time at leisure. Fly to London.

Trip summary

Many years of isolation have left the Kingdom of the Thunder Dragon a truly unique place. The towns of Bhutan are dominated by enormous monastery-fortresses, or dzongs, that have stood for centuries and are still in use today. The architecture is unlike anything else found in the Himalaya - houses are painted with magic symbols to keep out evil spirits, national dress is commonly worn and the 'Dragon' sect of Buddhism thrives and is integral to the lives of the people. This very original cultural identity combined with spectacular scenery and charming people all goes to make a visit to Bhutan a fascinating experience.

We explore all aspects of Bhutanese culture on this captivating tour. Your expert guide will make sure you visit the must-see sights but will also take you through the beautiful countryside with which Bhutan is blessed and off-the-beaten-track villages where you will get an insight into local life and customs little-changed over the generations. There is no hard walking involved in this trip but there are opportunities for some gentle walks to stretch your legs and to enjoy the wonderful scenery. You will also spend time at the Punakha Tsechu - a vibrant, colourful festival which will undoubtedly be one of the highlights of your holiday.

No other company offers such a comprehensive and well-led cultural tour of this wonderful Himalayan kingdom.

Your trip itinerary

Day 1: Depart London.

Fly overnight from London to Kathmandu.

Overnight: In flight

Day 2: Arrive Kathmandu.

On arrival in Kathmandu you will be met and transferred to Dwarika's Hotel, a luxurious and stylish 5* hotel filled with Nepalese furniture, carvings and statues. The hotel has a superb restaurant where you can try traditional Newari cuisine, as well as a beautiful swimming pool and an elegant courtyard.

Overnight: Dwarika's Hotel, Kathmandu

Day 3: Fly to Paro. Sightseeing as time permits.

Transfer to the airport for the short flight up to Bhutan. On a clear day the panoramic views of the Himalaya are sensational, including Everest, but particularly exciting is the approach through the Bhutanese foothills and the landing, including a few steep turns on the approach to the tiny airstrip of Paro. If possible try to sit on the left hand side of the plane for the most spectacular views.



In Paro you will be met by your Bhutanese guide and taken to your hotel.

The Paro Valley has always had a great strategic importance for Bhutan and was historically an important staging post on the trade routes with Tibet. The spectacular Paro Dzong, situated on a rocky outcrop above the Paro Chu and with views down both sides of the valley was historically one of Bhutan's strongest and most strategic fortresses. Before the rebuilding of the Tashidodzong in Thimphu, it was also the seat of Bhutan's National Assembly.

Depending on the arrival time of your flight there may be time for some sightseeing in Paro in the afternoon. You might wander around Paro township or pay a quick visit to the huge dzong. Then if there is time and you feel like a walk you could walk back to your hotel.

Overnight: Hotel Olathang or Similar, Paro (Meals: BLD)

Day 4: Drive to Thimphu with visit to Tamchhog Lakhang en route. Sightseeing in Thimphu.

After breakfast you will drive to Thimphu, about an hour and a half's drive. En-route you can stop to visit Tamchog Lakhang, a temple built in the 14th century. To reach it you have to walk across one of the ancient bridges built by the famous 'Iron Bridge' builder Thangthong Gyalpo. Thangtong Gyalpo was a great Buddhist master and also a pioneering civil engineer of the 15th century who is said to have built 58 iron chain suspension bridges around Tibet. He is often portrayed holding a section of iron chain in his right hand. This is just a short walk of about 15 minutes and the temple has a wonderful atmosphere of old Bhutan and is a lovely place to visit.

Thimphu itself has an attractive valley location and is relatively small for a capital city although it has grown greatly in recent years. There are many places of interest to visit there and initially, before checking in at your hotel, you might drive up to the giant Buddha statue to enjoy the splendid views out over the town.

After lunch you will take in some more sightseeing in Thimphu. Your guide may take you to visit the Takin Reserve located a little way above the town. This reserve, which covers several acres, is home to the Takin, the national animal of Bhutan and one of the strangest creatures you will ever see

Overnight: Norkill Boutique & Spa or Similar, Thimphu (Meals: BLD)

Day 5: Sightseeing in Thimphu. Visit Wangditse Monastery.

Today you may visit the Tashichho Dzong (the main government buildings), the Textile Museum, the Heritage Museum, the late King's Memorial Chorten, the National Library, the School of Painting and the silversmiths and pottery workshops. The Government Handicrafts Emporium is possibly the best place to look for local handicrafts especially if you are looking to buy national dress. The handmade paper workshop is a very interesting visit to see the paper being made. Nice items made from handmade paper are for sale there. You could also visit the Post Office to buy some of Bhutan's very attractive stamps. They also often have good t-shirts available to buy there. You may also walk along the main street in town and watch local life go by.



In the afternoon you will drive up to Sangaygang next to the Bhutan First Broadcasting Service tower, located in the North West of Thimphu. It is only about a mile drive up to the tower so if you feel like you would like to burn a bit more energy you can always walk up instead. From the tower you will have great views over Thimphu Dzong and the Thimphu valley as you start your walk contouring the beautiful hills to visit Wangditse Gompa. This walk should take around 1.5 hours. You will have time to visit the gompa before you walk down for another 30 minutes to reach Dechen Phodrang Monastery. This monastery houses around 450 student monks enrolled in a 8 year course. The monastery is also home to some fantastic UNESCO monitored 12th century paintings. You will then meet your vehicle and be driven back to Thimphu.

Overnight: Norkill Boutique & Spa or Similar, Thimphu (Meals: BLD)

Day 6: Drive to Punakha via the Dochu La, 3,140m/10,302ft. Visit Drukpa Kunley's Temple and villages.

In the morning you will have some time in Thimphu. Later you make the ascent up to the Dochu La pass. This pass at 3,140m/10,302ft is marked by 108 chortens. Here, weather permitting you may take in a magnificent mountain vista. On clear days there are fabulous views of the Eastern Himalaya from here but this is a beautiful spot even on misty days. You will have lunch at the pass with time to enjoy the view.

Descending from the pass you come to the lush Punakha Valley. Before driving to your hotel you will pay a visit to Chimi Lhakhang, taking a short walk across the paddy fields to visit this delightful small temple built by Drukpa Kunley. Known as 'The Divine Madman', Drukpa Kunley was a 15th Century Bhutanese lama and is Bhutan's most popular saint and one of the most important figures in Bhutanese folklore. Despite the apparent conservatism of the Bhutanese people, Drukpa Kunley with his unconventional views on sex is a great favourite throughout the country - the phallus symbols painted on the outside walls of houses date back to his teachings. Chimi Lhakhang is especially popular with women who come here to pray for children. Later you will drive up to the charming village of Talo (altitude 2,800m). This attractive, village is well known for its pretty girls and its neatness! First you will drive up to its fine gompa, built above the village and worth a visit for the spectacular views. After a visit there you walk down through the village and will see traditional village life going on. It's all very pretty - the beautiful farm houses of the village have their own well kept flower gardens and corn and vegetables are grown in profusion. There is an air of prosperity and contentment. You come out back onto the road below the village and then you may either walk down through woods and fields, or drive down, to the village of Nobgang, the birthplace of the four girls who in 1979 married King Jigme Singye Wangchuk, the current king's father, to become his four queens. After the king's abdication they became Bhutan's Queen Mothers. The gompas in Nobgang are sponsored by their family. The two villages of Talo and Nobgang have a longstanding rivalry in archery.

Overnight: Zhingkhram Resort or Damchen Resort or Similar, Punakha (Meals: BLD)

Day 7: Drive to Gangtey - 3½ hours drive. Visit Pele La and Gangtey Gompa. Optional afternoon walk.

Leaving Punakha you drive down the valley to Wangdiphodrang, once famous for its huge dzong which tragically burnt down in 2012. From Wangdiphodrang you drive up the beautiful wooded valley of the Dang Chu to the Pele La Pass at 3,420m/11,221ft, from where there are good mountain views - with clear visibility you should see across to some of Bhutan's highest summits including Chomolhari and Jitchu Drake. You then return a short way back the way you came and turn off toward the Gangtey Valley. Gangtey (or Phobjikha as this area is sometimes called) is a beautiful, wide, unspoilt glacial valley and is particularly famous as a major wintering ground for black necked cranes, which arrive here in November and stay till early spring before heading back to their breeding grounds in Siberia.

These birds are particularly respected in local culture and feature in local tradition as the "heavenly birds". Driving into the valley you will be able to call in to visit its fine gumpa. Built in the 17th Century the gumpa has recently undergone major renovation so is worth a visit to see some particularly fine Bhutanese craftsmanship. You will then continue to your hotel. In the afternoon you will have time for an easy but very pretty walk down the valley.

Overnight: Dewachen Hotel or Yo Lo Koe Lodge or Similar, Gangtey (Meals: BLD)

Day 8: Drive to Punakha. Punakha Valley walk and visit dzong.

After breakfast you drive back to Punakha. Then you will do a lovely, easy walk in the Punakha Valley which is very lush and will feel almost subtropical. Firstly you drive north up the valley. At a pedestrian suspension bridge which crosses the Mo Chu River you have a bit of a walk through paddy fields to the base of the hill where the chorten of Khamsum Yuelley Namgyal is sited. The climb to the top is quite steep but takes only 45 minutes or so. This Chorten was consecrated in December 1999 and contains sacred relics donated from Punakha Dzong.



You will then travel to fabulous Punakha Dzong - one of the most spectacular and important in the Kingdom. It has a lovely setting at the confluence of two rivers. In 1994 there was a major flood in the town which caused a lot of damage to the dzong but it has now been beautifully renovated and is a real showcase for Bhutanese craftsmanship and painting.

Overnight: Zhingkham Resort or Damchen Resort or Similar, Punakha (Meals: BLD)

Day 9: Attend Punakha Tsechu.

Today you attend the Punakha Tsechu, a festival held in the fabulous Punakha Dzong. This is an annual festival introduced by the Zhabdrung to commemorate famous Bhutanese victories over the Tibetans. During the festival there will be masked dances and other enactments recalling the days when, in the absence of an army, men from the eight Tshogchens, or great village blocks of Thimphu, came forward and managed to expel the Tibetan forces out of the country, ushering in a new-found internal peace and stability. Such festivals are great fun for visitors and locals alike giving the chance to attain religious merit, celebrate together and socialise.

Overnight: Zhingkham Resort or Damchen Resort or Similar, Punakha (Meals: BLD)

Day 10: Drive to Paro - 3½ hours. Visit Paro Dzong, Museum and Kyichu Lakhang.

After breakfast you drive back, over the Dochu La, to Paro. In the afternoon you will have time for some sightseeing in the Paro valley. Firstly you may visit the huge Paro Dzong, one of the most important in the kingdom. Above the dzong is the 17th century watchtower or Ta Dzong. This unusual, circular building houses Bhutan's National Museum and has recently been fully restored. The museum has a fantastic collection of Bhutanese national treasures with displays including depictions of a wide range of Bhutan's history and culture and an impressive collection of ancient thangkas featuring Bhutan's important saints and teachers. You will also find some fearsome festival masks, a collection of religious statues, some early stone carvings and the original iron links from the nearby Tamchhog Bridge.

There will then be time to visit the ancient temple of Kyichu Lakhang which was one of 108 temples built by Songtsen Gampo, an important early Tibetan king, in an attempt to pin down the Bon demon who was thought to hover over the whole of Tibet.

Overnight: Hotel Olathang or Similar, Paro (Meals: BLD)

Day 11: Full day in Paro Valley. Walk to Taktsang Monastery (Tiger's Nest).

A short drive beyond Paro town takes you to the trail head for the walk up to the famous Tiger's Nest, Taktsang Monastery. The monastery is perched some 600m/2,000ft up on a cliff overlooking the valley and was said to be where the legendary Indian saint, Guru Padma Sambhava, flew from Tibet on the back of a tiger to defeat five demons, who were opposing the spread of Buddhism in Bhutan. It's a steep uphill walk through woods, of about 1½-2hrs, to reach a tea house (an ascent of 340m/1,115ft.) Apart from offering welcome refreshment this tea house is one of the principle viewpoints of Taktsang, and those who prefer not to climb any further can relax here whilst others continue on. If there is a particular religious gathering or VIP visit in progress, you will not be able to enter the monastery but the further half an hour's ascent is well worth it in any case, as it brings you to another viewpoint directly across from Taktsang. If you are able to make a visit, the final section of the walk takes you from here steeply down 100m/330ft into the gorge that separates you from the monastery and then climbs back up again to reach the monastery gate.



Please note - If you prefer not to make the walk up to Taktsang your driver will be able to take you instead further along the valley to visit Drukgyel Dzong. Nearby there is also an excellent viewpoint for the summit of Mount Chomolhari, which at 7,314m /23,997ft, is the second highest peak in Bhutan.

Later you will have time at leisure or for some more sightseeing in the valley.

Overnight: Hotel Olathang or Similar, Paro (Meals: BLD)

Day 12: Fly to Kathmandu.

You will transfer to Paro Airport where you will say goodbye to your guide and driver. You then check in for your flight, normally in the early morning, which takes you out and over the Bhutanese mountains and past Kangchenjunga, Makalu and Everest (the latter is quite distant on this flight), finally dropping down into the Kathmandu Valley. You will be met and transferred to the Dwarika's Hotel, after which there will be plenty of time to relax, gather your thoughts and perhaps do some shopping or sightseeing.

Overnight: Dwarika's Hotel, Kathmandu (Meals: B)

Day 13: At leisure in Kathmandu. Transfer to the airport and depart for London.

You will have time at leisure in Kathmandu today when you might do some sightseeing - you might take a trip out to Patan, one of the ancient cities of the Kathmandu Valley. It is also worthwhile to visit the important complex of Hindu temples at Pashupatinath, just a short walk from Dwarika's Hotel, where there is a large temple to Shiva and the ghats on the banks of the river where cremations take place. The large stupa at Boudhanath is also worth a visit - this is a great focus for Buddhist pilgrims from all over the Himalaya. To the west of the city is another famous stupa, the so-called 'Monkey Temple', Swayambhunath, visited by Hindus and Buddhists alike. Alternatively you might do some shopping or simply relax by the pool at your hotel.

Later there will be a group transfer to the airport for your overnight flight to the UK.

Overnight: In flight (Meals: B)

Day 14: Arrive London.

Our grading system

Definitive Cultural Tour of Bhutan is graded as a Tour, as described below.

Tours

Tours may include any of the following activities: sightseeing, visiting local villages, exploring temples, game viewing, birdwatching, husky sledding, mountain flights, city tours and dramatic journeys by road, rail, or river. Occasionally there will be short, gentle walks so that you can properly explore the cultural sites you are visiting.

Trip altitude

Important - please be aware that this trip involves travel at altitude. Whilst all our itineraries are carefully designed to optimise acclimatisation to high altitudes, participants on this trip are likely to experience some symptoms of being at altitude. The Dossier pack we provide when you book your holiday includes comprehensive advice on safe travel at altitude. If you require further information or advice on travel at altitude prior to booking please contact the office to speak to an experienced member of our team. Alternatively we recommend www.medex.org.uk as a good source of information.

What the price includes

Mountain Kingdoms aims to offer the best value for money. We do not charge extra for meal packages or apply local charges and try to ensure that all the key elements of your holiday are included.

What's included:

- ✓ An English-speaking, Bhutanese guide
- ✓ Economy class return air fares from the UK & UK Departure Tax (flight inclusive only)
- ✓ Single timed airport transfers on group flights
- ✓ All internal flights and hotel/airport transfers
- ✓ Bhutan visa
- ✓ Bhutan departure tax
- ✓ All road transport by private vehicles
- ✓ 5-star hotel accommodation in Kathmandu, twin share, bed and breakfast basis
- ✓ In Bhutan, good standard hotel accommodation in main towns and best available hotels in outlying towns, on a twin share, full board basis
- ✓ Sightseeing where specified
- ✓ A free Mountain Kingdoms Water-to-Go bottle
- ✓ Carbon offsetting with the Ecoan Tree Planting Project (for clients taking our flight inclusive option)

Airport transfers

The cost of a transfer to/from the airport is included in the price of your holiday. This is a single group transfer which is arranged to coincide with the timings of the group flights. If you book your own flights which arrive/depart at different times to this, or we book flights at your request that have different timings, we will be happy to provide a quote for a separate transfer. Please contact us should you require any further information.

What's not included:

- ✗ Travel insurance
- ✗ Visa fees for Nepal
- ✗ Lunch and evening meals in Kathmandu
- ✗ Tips

Water-to-Go Reusable Bottle Campaign

We have joined the campaign to help cut down on the use of plastics and, in particular, single-use water bottles. To do this we have teamed up with the revolutionary company, Water-to-Go who have developed a multi-use drinking bottle with a reusable filter that eliminates over 99.9% of all microbiological contaminants. This makes water from virtually any source safe to drink and significantly reduces the need for travellers to buy bottles of water wherever they are in the world.

Clients who are not given a free Mountain Kingdoms kit bag for their holiday (these are required for certain treks), will instead receive a free Mountain Kingdoms Water-to-Go bottle. These unique Water-to-Go bottles can also be purchased from us at a discounted rate.

For further information about our campaign visit <https://www.mountainkingdoms.com/water-to-go-reusable-bottle-campaign>.

Your accommodation

We will endeavour to secure the hotels named in this itinerary but if the first choice of hotel is not available we will secure a suitable alternative of a similar standard.

Bhutan hotels

Please note that there is generally a shortage of hotel/lodge accommodation in Bhutan, especially outside Paro and Thimphu. Although we pre-book rooms as far in advance as possible, anything can happen and probably will, e.g. if the royal family suddenly has a visiting delegation, accommodation may be changed at short notice. Additionally, during peak seasons, it can sometimes be very difficult to secure not only the hotels/lodges we want, but also the single rooms we might need. In these circumstances singles may occasionally be asked to share but in such cases we refund any single room supplements that might apply. Given these conditions we will make every effort to secure any of the following hotels.



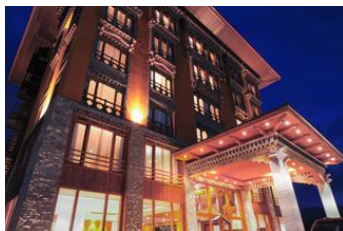
Dwarika's Hotel, Kathmandu

We use the 5-star Dwarika's Hotel. It is built in Nepalese style and features many architectural relics rescued from palaces and temples in the valley as well as Nepalese furniture, carvings and statues. The building has a palace-like atmosphere and you really feel as if you are stepping back into Nepal's history. It is filled with fascinating original carvings and artefacts. Its elegant restaurant is one of the places to eat in Kathmandu. It also has a pleasant courtyard garden with swimming pool.



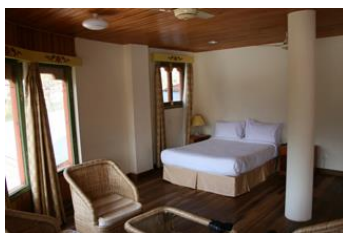
Hotel Olathang or Similar, Paro

Originally built for the coronation of the 4th King in 1974, this attractive hotel stands on a hill overlooking Paro town. Rooms in the main building are set around a peaceful courtyard and there are also a number of cottages dotted around the spacious grounds. Decoration is typically Bhutanese with stripped wooden floors and colourfully painted walls. Rooms are well-equipped and the hotel has its own spa, international restaurant and bar.



Norkill Boutique & Spa or Similar, Thimphu

The Norkill is a four star hotel in the centre of Thimphu town with a good range of facilities. It has a large fitness centre plus a sauna, and also has its own in-house dining plus an attractive roof terrace where you can enjoy a drink with views. Rooms are contemporary in design and very comfy with kettles and fridges.



Zhingkham Resort or Damchen Resort or Similar, Punakha

Overlooking Punakha Dzong, and only opened in 2016, the Zhingkham Resort is one of the best hotels in Punakha. The well-proportioned, stylish rooms come complete with free Wi-Fi, minibars and coffee/tea making facilities as well as balconies giving picture-perfect views of the dzong and the surrounding hills and countryside. The Damchen Resort is a newly renovated hotel sitting on the banks of the river in the Punakha valley. Rooms are clean and bright with wooden furniture and nice decorative touches. The hotel is a short, level walk from the small town of Khuruthang.



Hotel Dewachen, Gakiling Or Yo Lo Koe Gangtey

The Dewachen Hotel in the Phobjika Valley is a lovely, boutique property with excellent views, wood burning stoves and well-equipped bathrooms. The hotel has a cocktail bar, good restaurant and a small spa with a traditional hot stone bath.. As it only has a small number of rooms we sometimes use the Gakiling Guest House, Yo Lo Koe or similar instead.

Meal arrangements

Bed and Breakfast in Kathmandu and full board in Bhutan.

Flight arrangements

Flight inclusive from price

Our 'Flight inclusive from' price is based on the best fare available at the time of printing. As airfares change on a constant basis, this should be used only as a guide price. Rest assured that, at the time of booking, we will endeavour to get the best possible price for the flights you need. Remember, the earlier you book the greater your chances of securing the best fare.

Flight inclusive packages booked through Mountain Kingdoms are protected through our ATOL bonding scheme.

Flight upgrades and regional Airports

Please call us on +44 (0)1453 844400 for flight options from regional UK airports, Business Class upgrades, alternative airlines and stopovers. Please also check our website for the most up to date flight inclusive 'from' prices.

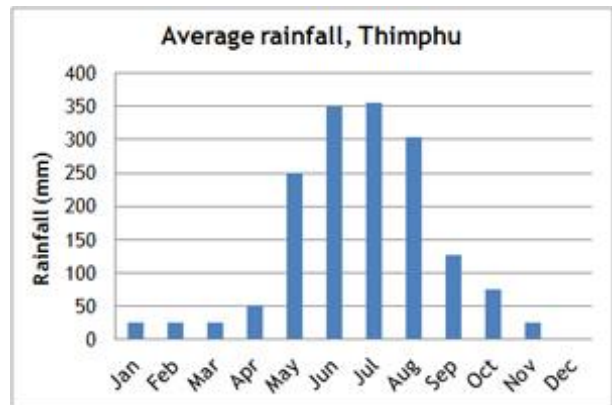
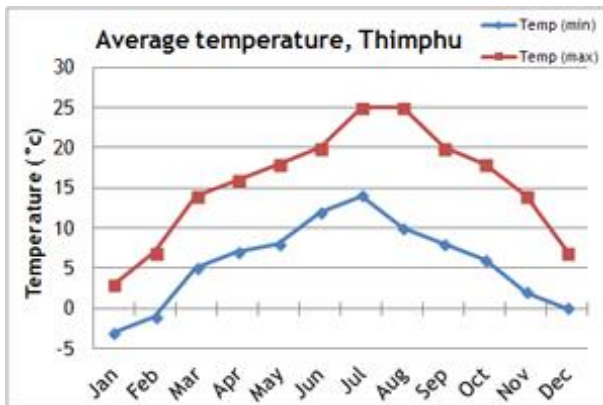
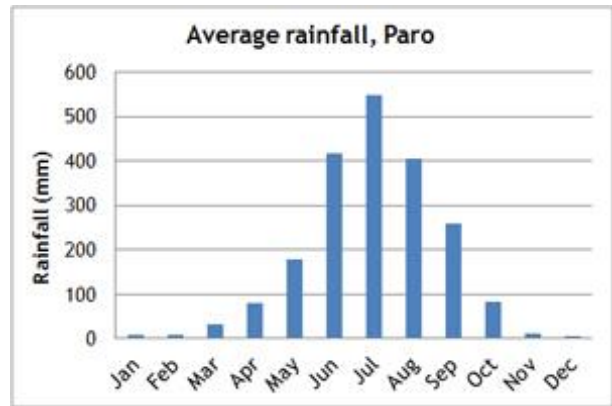
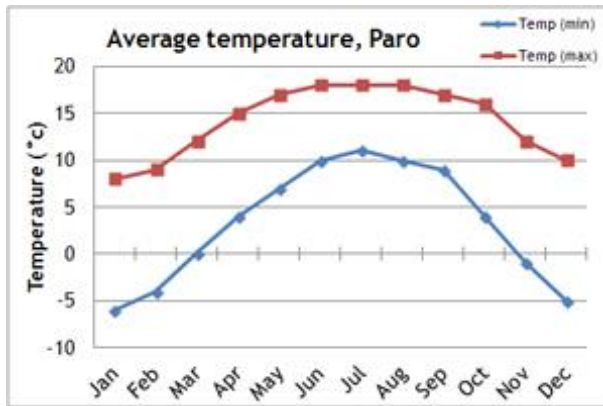
Further information

When we receive your booking, we send you a full Trip Dossier which contains details of any visas and vaccinations required, a suggested gear and clothing list and lots of useful information. If you do have queries at this initial stage do call us on 01453 844400 and we will be pleased to offer advice.

The nature of adventure travel

Every effort will be made to keep to this itinerary but we cannot guarantee that things may not change, either before you travel or while you are away. By its very nature, adventure travel involves an element of the unexpected, particularly in more remote areas. A variety of factors such as adverse weather conditions, changes to local schedules and difficulties with transportation can all contribute to the need to make changes to the itinerary, often at the very last minute. Our Operations Manager and your Trip Leader will make every effort to maintain the integrity of the original itinerary and minimise the impact of any changes, but an easy-going and flexible nature is a real asset! Please note that all timings and distances given are approximate.

Climate information



Extensions

Extending your holiday

If you would like additional inspiration on how or where to extend your holiday please call us on 01453 844400. Alternatively, you can download a range of extension information sheets on our website, at www.mountainkingdoms.com.



Hotel upgrades and extra nights in Bhutan

If you would like to upgrade your hotel during your holiday take a look at our selection of luxury properties in Bhutan such as Uma Paro or the Taj Tashi in Thimphu, you can download a leaflet from our website detailing all hotel options. We can also add additional nights in Bhutan at the start or end of your trip.



Additional accommodation in Nepal

If you would like to extend your stay in Nepal, you can add extra nights at your group tour accommodation or choose from our range of distinctive properties in Pokhara and the Kathmandu area. We can offer luxury resorts, heritage hotels, tranquil lodges and characterful cottages. Our selection includes Dwarika's Resort at Dhulikhel, Pavilions Himalaya at Pokhara, Tiger Mountain Pokhara Lodge and Shivapuri Heights Cottage. Individual extension leaflets for all these options can be downloaded from our website or requested from our office.



Kathmandu Valley sightseeing excursions

We can arrange half day or full day sightseeing tours taking you to the key cultural attractions of central Kathmandu or the Kathmandu Valley including the World Heritage Sites of Bhaktapur and Patan. Your tour will be led by an English speaking guide and you will have a private vehicle and driver.



Wildlife extensions in Nepal - Chitwan, Bardia & Koshi Tappu

Visit Chitwan or Bardia National Parks home to a rich variety of birds and animals including elephant, rhinos, leopard and Bengal tiger. Stay in a comfortable lodge and enjoy a range of wildlife viewing activities. Alternatively visit the renowned Koshi Tappu Wildlife Reserve - one of the finest birdwatching and wildlife areas in all Asia.



Royal Manas National Park, Bhutan

Extend your stay in Bhutan with an extension to the Royal Manas National park, a wonderful birder's paradise close to the Indian border. Our extension package gives you three full days to explore the park and surrounding area, and you will be accompanied throughout by a specialist bird and wildlife guide. We also include all meals, private transport to/from Paro, and hotel accommodation close to the park.

Bumdra Trek, Bhutan

Add an overnight trek to your Bhutan holiday. Follow a trail from Paro to the Bumdra Monastery, high above the Paro Valley then descend to Taktsang Monastery by a little trekked path. Enjoy high mountain views and spend a night camping below beautiful Bumdra Monastery. The fully supported trek includes a guide, trek crew, all camping equipment.

Why book this holiday with Mountain Kingdoms?

- Our carefully planned itinerary offers ample time to explore Bhutan's key cultural sights but also to get off-the-beaten-track to discover other aspects of life in the Thunder Dragon Kingdom.
- We include a visit to a festival - one of the great highlights of any holiday in the Thunder Dragon Kingdom
- While in Kathmandu you will stay at Dwarika's Hotel. Dwarika's is truly unique heritage property and one of the best hotels in Kathmandu.
- Your tour will be led by professional, English-speaking guides who will be delighted to share their expert knowledge of the history, culture and nature of their home country.
- We have been pioneering holidays in Bhutan for over 30 years. Our M.D. Steve Berry, is one of the leading authorities on Bhutan in the travel industry and has written two books about his experiences in the Thunder Dragon Kingdom.
- Many members of the Mountain Kingdoms team have first-hand experience of Bhutan. Steve and Seraphina have visited the country on numerous occasions and would be very happy to answer any questions you may have about this holiday.
- Our maximum group size is 12 for this trip. This provides for a genuine small group travel experience and helps reduce the negative aspects associated with larger tour groups.
- If you wish to fly with a specific airline, from a regional UK airport or on alternative dates to the main group we would be happy to arrange this for you. Please contact our Flights team for flight options, quotes and further information.
- We offer a flexible service and can extend your holiday with extra hotel nights, upgrades and exciting activities in both Bhutan and Nepal.
- As part of our commitment to 'Tourism Declares a Climate Emergency', we will be carbon-offsetting all international flights booked through us by donating funds to the Ecoan Tree Planting Project in Peru.

If we've tempted you to take your next holiday with us, we advise you to check availability and you can do this via our website: www.mountainkingdoms.com or by calling the team on +44 (0)1453 844400. Bookings can be made online, by phone or by completing a booking form and returning it to us. We can also provisionally hold places if you need time to consider your options.

What our clients say



An amazing experience. We were well looked after. The guide was excellent.

- Mrs P N, Somerset

Spectacular scenery and architecture experienced under a cloudless sky. Reaching Taktsang Monastery was the highlight of my time in Bhutan. Excellent customer service from all concerned. Would have no hesitation in recommending Mountain Kingdoms.

- Miss C N, Essex



A truly amazing experience. A well-paced itinerary, an excellent guide and driver, who enabled us to get a real feel of the country, its culture, traditions and people. In no particular order, we appreciated the support and communication from Steve and the team, the small group size, the smooth airport transfers, the care and attention we received from the staff in Bhutan and Nepal, the well-paced itinerary, the expert knowledge of our guide, the very safe driving of our driver.

- Mr P H, Devon



A relatively gentle but varied and adventurous exposure of this very different and charming country. "Unique" is a much used adjective, but Bhutan really does deserve the description from its flora, fauna, animal, and bird life. But perhaps the most striking difference is in its national outlook and pride; where else does almost everyone wear with pride their national costume everyday, or measure national and individual success in terms of happiness rather than material terms? And the scenery is breath-taking (as is the effect of the many high passes one crosses!)

- Mr J L, Hampshire



A most enlightening trip to a mountain kingdom which will remain in my memories as an extremely spiritual and peaceful experience. A great team gave us some very special insight into the harmony of life in Bhutan. The Black-Necked Crane Festival was most interesting.

- Mr L, Cheshire

It was fantastic, even better than we had imagined. Our Bhutanese guides were brilliant, and made the tour special both in their own ways. I don't know how we can find a holiday which will beat this one!

- Mr & Mrs C, Oxfordshire

Mountain Kingdoms - distinctly different

Truly independent

In an age where many so-called 'independent' travel companies have in fact been bought out by multi-national giants, we remain fiercely independent with all the benefits this offers our clients.

Value for money prices with an emphasis on quality

We are not in the business of cutting our itineraries and services to the bone to offer eye-catching cheap prices. We use some of the best airlines, and typically 3 or 4 star hotels in cities. We include the majority of meals and private transport for road travel. We use excellent equipment and appoint well-trained staff and leaders. Last year, over 98% of our clients rated their Mountain Kingdoms holiday as 'excellent' or 'good'. We are members of AITO and bound by their quality charter.

Complete financial security

You can book with us confident that your holiday has full financial protection. Flight inclusive holidays are financially protected by the Civil Aviation Authority under ATOL licence number 2973 and 'Land Only' holidays are covered by a bond secured with ABTOT.

No Surcharge Guarantee

Your peace of mind is important to us so we have a No Surcharge Guarantee on all Land Only and Flight Inclusive bookings. This means that there will be no change to the price of your holiday once we have confirmed your booking, regardless of fluctuations in exchange rates or fuel prices.

Award winning Responsible Tourism

We feel strongly that all our holidays should benefit local communities, protect the environment and respect local traditions, religion and heritage. You can read more about the charities we support and our Responsible Tourism commitments and initiatives on the following page or at www.mountainkingdoms.com.

Genuine small group travel

Almost all of our holidays have a maximum group size of just 12, plus leader. This provides more contact with your leader, readier access to off-the-beaten-path areas, greater interaction with local communities and a reduced environmental impact.

Loyalty Discount

If you have previously travelled with us we recognise your loyalty with a discount on future trips.

Booking your holiday - it couldn't be easier

Once you've chosen your Mountain Kingdoms holiday you can book online, call the office or complete and post a booking form which can be found in our brochure or downloaded from our website. If you would like to hold a place on one of our trips, whilst you make up your mind, please give us a call to make a provisional booking. This is a no-obligation, no-cost booking and we will hold your place until space comes under pressure or we need your decision.

Comprehensive information

When we receive your booking we send you a full trip dossier which contains details of visas and vaccinations required, a suggested gear and clothing list and lots of useful information. In fact, everything you need to know to give you peace of mind and allow you to prepare for your trip of a lifetime.



RESPONSIBLE TOURISM STATEMENT CLIMATE EMERGENCY PLAN



For over 33 years, Mountain Kingdoms has been offering people the chance to visit amazing places on this extraordinary planet. We now offer trips to all corners of the world, but we are conscious that inevitably our holidays have a detrimental impact on the world around us, and we want to do all we can to reduce our carbon emissions. We are a signatory to Tourism Declares a Climate Emergency, along with a growing number of like-minded, reputable tour operators. For more information, please visit www.tourismdeclares.com

From 2020 onwards, we will be focusing on how we can reduce the carbon emissions that our holidays produce, and how to counterbalance this carbon by supporting carbon offset measures.

Here are some of our current and future plans to minimise the impact of our business as a whole:

Carbon Offsetting

Already doing:

- ✓ We have been offsetting carbon since 2007, but will be increasing our donations to the [Ecoan](#) tree planting project in Peru this year. This is with a trusted partner where the funds go directly to a project where the community plants trees on its own land.

Will do:

- ✓ We are working on making our carbon offsetting more accurate and targeted.
- ✓ In future, we will add to that a further estimate for carbon produced by hotels, local road travel, trains and internal flights to arrive at a carbon offset sum for each trip we operate.
- ✓ Carbon offsetting will be included in our holiday prices. For our Flight Inclusive holidays it will include the international flight and any emissions produced by inland travel and accommodation. Our Land Only prices will include the cost of offsetting emissions caused by inland travel and accommodation.

Reducing Carbon Emissions

Already doing:

- ✓ We already offer the majority of our customers a free filtered water bottle which means they can instantly cut down on their single-use plastic consumption. This will be an ongoing project.
- ✓ We already predominantly use locally owned hotels, but will continue to ensure that, where possible, we use these rather than multinational chains.
- ✓ We have joined the Tourism Declares a Climate Emergency initiative to stand alongside like-minded travel companies, to work together to initiate best practices to make tourism as sustainable as possible.

Will do:

- ✓ We will re-evaluate our flights to make sure we are using the most fuel efficient airlines with the youngest fleets and, where possible, direct flights for each trip.
- ✓ We will stop offering unnecessary optional flights - for example our Everest sightseeing trip.
- ✓ We will eliminate unnecessary staff flights wherever possible.
- ✓ We will look at minimising internal flights.
- ✓ We will be asking all our worldwide agents and suppliers to look at their own carbon footprint and encourage them to reduce it.
- ✓ We will promote our more low impact trips to give customers an informed choice.

As part of our wider commitment to Responsible Tourism, we will continue to support a number of charities with whom we have had a long standing relationship over many years. These include: Shiva Charity in Nepal (Ginette Harrison School), Simien Mountains Mobile Medical Service and Porter Welfare, as well as setting aside a sum for emergency disaster relief should the need arise.

