

## Gentle Walking Bhutan with Thimphu Tsechu

The best of Bhutan - gentle walks, cultural highlights, comfortable accommodation and a festival visit.



### Group departures

See overleaf for departure dates

### Holiday overview

Style	Walking
Accommodation	Hotels
Grade	Gentle
Duration	16 days from London to London
Trekking / Walking days	Walks on: 8 days
Min/Max group size	4 / 12. Guaranteed to run for 4
Trip Leader	Local Leader Bhutan
Land only	Joining in Kathmandu, Nepal
Max altitude	Cheli La Pass, 3,990m/13,090ft, Day 11

**Private Departures & Tailor Made itineraries available**



tel: +44 (0)1453 844400 fax: +44 (0)1453 844422 info@mountainkingdoms.com www.mountainkingdoms.com

Mountain Kingdoms Ltd, 20 Long Street, Wotton-under-Edge, Gloucestershire GL12 7BT UK  
Managing Director: Steven Berry. Registered in England No. 2118433. VAT No. 496 6511 08

# Departures

---

## Group departures

### 2025 Dates:

Wed 05 Mar - Wed 19 Mar	With Punakha Tsechu
Sun 30 Mar - Tue 15 Apr	With Paro Tsechu
<b>Mon 29 Sep - Tue 14 Oct</b>	<b>With Thimphu Tsechu</b>
Tue 04 Nov - Tue 18 Nov	With Black-necked Crane Festival
Sun 21 Dec - Mon 05 Jan 2026	With Trongsa Tsechu

This is the detailed itinerary for our September 2025 departure only. Detailed itineraries for all other departures can be downloaded from our website or requested from the Mountain Kingdoms office.

### Group prices and optional supplements

Please contact us on +44 (0)1453 844400 or visit our website for our land only and flight inclusive prices and single supplement options.

### No Surcharge Guarantee

The flight inclusive or land only price will be confirmed to you at the time you make your booking. There will be no surcharges after your booking has been confirmed.

### Will the trip run?

This trip is guaranteed to run for 4 people and for a maximum of 12. In the rare event that we cancel a holiday, we will refund you in full and give you at least 6 weeks warning. Many trips do fill up quickly - we advise you to book early if you want to secure a place(s) on the dates of your choice.

### Insurance

We offer a travel insurance scheme - please contact us for details.

### Private Departures

We can also offer this trip as a private holiday. A Private Departure follows exactly the same itinerary as the group departure but at dates to suit you (subject to availability) - please contact us with your preferred dates.

### Tailor Made service

We pride ourselves on the level of quality and choice we provide for our clients who want a fully tailor made holiday. One of our well-travelled experts will advise on the accommodation best suited to your needs, the sights you should visit (and those to avoid!) and the best walks and activities matched to your ability. In short, we will work together with you to create your perfect holiday. If you would like to explore the idea of a Tailor Made holiday then please contact us or see the Tailor Made pages of our website for further inspiration.

## Your guide

---



You will have an English-speaking Bhutanese guide to lead your trip. Mountain Kingdoms have been working with the same partner in Bhutan since 1986 and their guides are some of the best in the Kingdom. They speak good English, as this is taught in all Bhutanese schools, and are fully qualified guides. The Tourism Authority of Bhutan insists that a Bhutanese trek or tour leader must pass his/her guiding exams in Thimphu before accompanying groups of foreign visitors. Guides receive regular 'top-up' training and 15 of our regular leaders have completed an extended training course run by Mountain Kingdoms in Bhutan.

## Your trip highlights

---

- First rate accommodation in Bhutan using comfortable hotels and lodges
- Relax at Dwarika's Hotel in Kathmandu - a unique heritage property
- Explore the cultural highlights of Bhutan including iconic Taktsang Temple
- Excellent and varied programme of gentle walks
- Join the celebrations at the Thimphu Tsechu

## At a glance itinerary

---

Days 1-3	Fly to Kathmandu. Fly to Paro and sightseeing.
Day 4	Drive to Thimphu. Attend Thimphu Tsechu. Afternoon visit to giant Buddha statue for orientation views and other sightseeing.
Day 5	Morning walk to Wangditse Monastery. Afternoon sightseeing in Thimphu.
Day 6	Drive over the Dochu La to Punakha. Visit Punakha Dzong and walk in the Punakaha Valley. Visit Chimi Lakhang if time permits.
Days 7-8	Drive to Longtey. Walk over Giche La to Gangtey. Visit Gangtey Gompa. Half day valley walk and drive to Trongsa.
Days 9-10	Drive to Chumey and Tharpaling. Ridge walk. Drive to Jakar and walk in the Bumthang Valley
Day 11-12	Fly to Paro. Drive to Haa and explore the valley. Return to Paro.
Day 13	Walk to Taktsang Monastery. Sightseeing in the Paro Valley.
Days 14-16	Fly to Kathmandu. Time at leisure. Fly to London.

## Trip summary

---

The tiny Kingdom of Bhutan in the eastern Himalaya, or the 'Thunder Dragon Kingdom', successfully remained isolated from the outside world for very many centuries. Only at the time of the 4th King's Coronation (1974) was the first trickle of foreigners allowed in. Prior to the building of the road from India to Thimphu even visiting Indian presidents took six days on horseback to visit the King. It still remains a secretive Kingdom and the present 5th King is keen to preserve its unique customs and traditions.

Its history is a capsule of all that is mystical about the Himalaya; re-incarnate rulers, who used black magic to defeat Tibetan aggressors, lama-saints, who foretold the future and who fought demons opposed to the spread of Buddhism, and civil wars between powerful district governors, or penlops, who laid plot and counter-plot in an endless cycle of strife and assassinations.

This holiday offers the perfect introduction to Bhutan, for those who like to explore on foot! We have designed the itinerary to give you a wide variety of experiences though it will be an adventure enjoyed in comparative comfort because every night is spent either in a hotel or comfortable lodge. Each walk has an interesting objective taking you to fascinating temples, hermit retreats, old palaces, ancient villages or simply into lovely scenery. This is a holiday that will be enjoyed to the full by those who enjoy weekend walks in the British countryside. As well as the main walk, on certain days a gentler or harder walk may also be possible. On certain days it is also possible to opt out of the walk, enabling you to relax in or around your hotel or lodge. There are also exciting road journeys following twisting mountain roads and crossing high passes in your comfortable mini-coach. By its nature this is an adventure with plenty of varied walking in a place that is only just emerging into the 21st Century.

This departure includes time at the Thimphu Tsechu - one of the most significant and impressive festivals in the Bhutanese calendar.

## Special notes

### **Kathmandu - Paro flights**

Please note that there is the small possibility that flight schedules between Kathmandu and Paro could change in the coming months. This may result in alterations to the itinerary and/or the dates of travel.

### **Paro-Jakar flights**

The domestic flights to/from Paro/Jakar are weather dependent and there can be difficulties securing these flights, so you need to be prepared for the drive between these destinations if the flight does not operate. Our itineraries are planned to allow enough time for this road journey if flights are cancelled for any reason.



# Your trip itinerary

---

## Day 1: Depart London.

---

Depart London on your overnight flight to Kathmandu.

**Overnight: In flight**

---

## Day 2: Arrive Kathmandu.

---

You will be met and transferred to the luxurious and stylish Dwarika's Hotel which is filled with Nepalese wood carvings and statues. The superb restaurant at Dwarika's offers traditional Newari cuisine and the hotel also has a cool, elegant courtyard and an inviting swimming pool. After the long flight from London there is no better place to relax.

**Overnight: Dwarika's Hotel, Kathmandu**

---

## Day 3: Fly to Paro. Sightseeing as flight schedule allows.

---

Transfer to the airport for the short flight up to Bhutan. On a clear day the panoramic views of the Himalaya are sensational, including Everest and Kangchenjunga, but particularly exciting is the approach through the Bhutanese foothills and the landing, including a few steep turns to land at the tiny airstrip of Paro. Although you are at the mercy of the airline computer, if possible try to sit on the left hand side of the plane for the most spectacular views.

In Paro you will be met by your Bhutanese guide and taken to your hotel located above the town of Paro. The Paro Valley has had a great strategic importance in the history of Bhutan and was in the past an important staging post on the trade routes with Tibet. Paro Dzong, situated on a rocky outcrop above the Paro Chu and with views down both sides of the valley, was historically one of Bhutan's strongest and most strategic fortresses and, before the rebuilding of the Tashidodzong in Thimphu, it was also the seat of Bhutan's National Assembly.

You might have time in the afternoon, depending on your flight schedule, for a visit to the Bhutan National Museum or to the Paro Dzong. You may also like to wander round Paro town-ship before returning to your hotel.

**Overnight: Hotel Olathang or Similar, Paro (Meals: BLD)**

---

## Day 4: Drive to Thimphu. Visit Thimphu Tsechu. Visit Buddha statue or other sightseeing as time allows.

---

This morning you will make the drive to Thimphu (1½ hours) to attend the Thimphu Tsechu. The Thimphu Tsechu is one of Bhutan's most important festivals and is massively impressive. It is held in the inner courtyards of the Tashichhoedzong, Thimphu's monastery/fortress. Such festivals in Bhutan are important cultural and religious events. People may attain merit by the mere act of attending the festival but as important, they are an opportunity to socialise and have fun. The Black Hat Dancers and all the other colourful ceremonies are thought to dispel the evil spirits that have accumulated over the ground during the previous year. Beware the very naughty clowns who spend a lot of their time teasing the crowd (and the dancers). Archery is also important to the Bhutanese and there may be a competition you can watch.



Depending on how long you spend at the festival you may have time for some sightseeing in Thimphu in the afternoon. Firstly you will drive up to the giant Buddha statue for fine views over the town and you might also like to visit the 'zoo'. This is a very large enclosure of several acres located just above the town and containing just one type of animal, the Takin, Bhutan's national animal. The Takin is a very rare animal found only in Bhutan and parts of China and is possibly one of the quirkiest and strangest looking animals you will ever see.

**Overnight: Phuntso Pelri Hotel or Similar, Thimphu (Meals: BLD)**

---

---

**Day 5: Walk to Wangditse Monastery. Sightseeing in Thimphu.**

---

The town of Thimphu has an attractive valley location and is relatively small for a capital city although it has expanded greatly in recent years. It replaced Punakha as the capital of Bhutan in 1955 and contains most of the Bhutan's most important political buildings including the National Assembly and the king's official residence. There is a large and busy market held at the weekend.

In the morning you have the opportunity for a pleasant walk outside of town. You will drive up to Sangaygang, next to the Bhutan First Broadcasting Service tower, located in the North West of Thimphu. It is only about a mile drive up to the tower so if you feel you would like to burn a bit more energy you can always walk up instead. From the tower as you start your walk you will have great views over Thimphu Dzong and the Thimphu Valley, and you contour through beautiful scenery to visit Wangditse Gumpa. This walk should take around 1½ hours. You will have time to visit the gumpa before you walk down for another 30 minutes to reach Dechen Phodrang Monastery, a monastery which houses around 450 student monks enrolled on an 8 year course and is also home to some fantastic UNESCO monitored 12th century paintings. You will then meet your vehicle and be driven back to Thimphu for lunch.

In the afternoon your guide will take you sightseeing round town. There are many places of interest to visit including the Tashishoddzong (the main government buildings), the Heritage Museum, the late King's Memorial Chorten, the National Library, the School of Painting and the silversmiths and pottery workshops. The Government Handicrafts Emporium is possibly the best place to look for local handicrafts especially if you are looking to buy items of national dress. It is interesting to visit the handmade paper workshop and see the paper being made. Some nice items made from handmade paper are also for sale there. You could also visit the Post Office to buy some of Bhutan's very attractive stamps.

**Overnight: Phuntso Pelri Hotel or Similar, Thimphu (Meals: BLD)**

---

**Day 6: Drive over the Dochu La to Punakha. Visit Punakha Dzong. Walk from the Dzong to the village of Samdingkha - 3-4 hours.**

---

After breakfast you will drive east to Punakha. Leaving Thimphu you climb to cross the Dochu La Pass, 3,048m/10,000ft, a spot marked by 108 chortens. Here, weather permitting you may take in a magnificent mountain vista. On clear days there are fabulous views of the eastern Himalaya from here, but this is a beautiful spot even on misty days. You then drive down through varied forest into the lush Punakha Valley.

You stop at Punakha Dzong, one of the most spectacular and important in the kingdom as well as being one of the most picturesque. It is situated at the confluence of two rivers - the Mo Chu and the Pho Chu. Damaged by flooding in 1994, the dzong has now been beautifully renovated and is a real showcase for Bhutanese craftsmanship and painting. You are normally allowed into the dzong unless there are VIPs visiting.



After your visit you begin your walk which starts near the dzong and follows the left bank through forest. Sometimes the path is high above the river affording lovely views of hamlets, villages, lone houses, and the odd temple. You can see the extensive cultivation, and to the north the hills rise up and become dark hazy mountains. The languid river, braided sometimes into minor rushing rapids, has two or three bridges. The first of these is a huge, long suspension bridge that can accept brave horses in single file. As you walk further you will come across the ruins of a large old house. The walls, made in the traditional way of shuttered and packed earth, still survive. Further still there are ancient canyons whose walls and cliffs look like they are also made of fossilized mud. Finally, you can see the larger village of Samdingkha ahead which you reach by passing through cultivated fields that are fenced to protect the crops from wild animals. The village is a quiet, timeless place although it does have a couple of small shops. You'll find a more substantial steel girder bridge here which you will cross to rendezvous with your vehicle.

If the weather is inclement you may do another longer walk which we call the 'Three Temples walk' - 12½ km, 4-5 hours. This starts at the village of Jibjokha which sits up in the hills above Samdingkha. is a circular walk that follows undulating paths and tracks through picturesque, open farmland, shady woods and vast rice terraces revealing traditional village life in rural Bhutan.

Once you have completed your walk you will drive to your hotel.

**Overnight: Zhingkhams Resort or Damchen Resort or Similar, Punakha (Meals: BLD)**

---

#### **Day 7: Drive to Longtey. Walk from Longtey to Gangtey over the Giche La - 3-4 hours.**

---

After breakfast at the hotel you will drive down the Punakha Valley and up through the town of Wangdi Phodrang. Unfortunately the massive dzong here burnt down in 2012 - a great cultural loss - although it is being rebuilt. You then drive up the beautiful wooded valley of the Dang Chu to cross the Pele La Pass at 3,300m/10,827ft. From here there are good views. Descending from the pass you continue down to reach the village of Longtey.



You alight from your vehicle at the village of Longtey, below the Pele La and your lovely walk to Gangtey starts from here. You drop down from the road on a trail to reach a large meadow where yaks graze in the winter months and then climb the short way to the pretty village of Kipche. Bypassing the village you climb in beautiful oak/rhododendron forest to the Giche Pass at 3,560m/11,680ft. From the pass you will have beautiful views right down to Gangtey Gomba and the wide Phobjika Valley below. Your descent from the pass is steep at first, but gentle as you descend, through the village of Kumbu, all the way to join the road near Gangtey Gomba. This impressive gomba was built in the seventeenth century and is situated on a small hilltop with delightful views over the valley. Your transport will be waiting here and you will drive to your accommodation.

Gangtey (or Phobjikha as this area is also called) is a beautiful wide, unspoilt glacial valley and is particularly famous as a major wintering ground for Black-necked cranes, which arrive here in late October and stay till early spring before heading back to their breeding grounds in Siberia. These birds are particularly respected in local culture and feature in local tradition as the 'heavenly birds'.

For those who prefer not to join today's walk, it will be possible to remain with the vehicle and drive straight to your overnight accommodation.

**Overnight: Hotel Gakiling or Yo Lo Koe Lodge or Similar, Gangtey (Meals: BLD)**

---

#### **Day 8: Half day Gangtey Valley walk. Drive to Trongsa. Visit Ta Dzong Museum.**

---

This morning you will have the chance for a pleasant walk in the valley. In addition to glorious scenery, the valley boasts some wonderful legends surrounding events and geography, including tales about two different types of Yeti, a large one and a small variety, and many other interesting legends. A number of different walks are possible here and your guide will suggest one that is suitable for your group. Firstly it is a short 10-minute drive to reach the Black-necked crane Information Centre. The cranes winter in this valley but will not have arrived in time for your visit. The centre has interesting displays on the ecology of the valley, a small library on Bhutanese wildlife and birds and some telescopes for observing birdlife. Driving on it is another 10-15 minutes to reach Gangtey Gomba from where various walks are possible.

After lunch, you drive out of the valley and over the Pele La again to continue on to reach the town of Trongsa. You will see Trongsa's splendid Dzong long before you reach it because the road takes you up a long side valley before eventually turning back to Trongsa town. Trongsa has an exceptionally dramatic dzong, the ancestral home of the royal family. Because of its important strategic location this was one of the most important dzongs in the country. Set above the dzong is the Ta Dzong, the watchtower, a lovely old building which has been recently really beautifully renovated and houses an excellent museum with several floors of royal memorabilia and sacred artefacts. The views from the roof are worth the climb.

**Overnight: Yangkhil Resort or Similar, Trongsa (Meals: BLD)**

---

**Day 9: Drive to Chumey and Tharpaling. Ridge walk 3-4 hours. Drive to Jakar, 2,580m/8,465ft, in the Bumthang Valley.**

---

From Trongsa you drive across the Yotong La and towards Bumthang. The Bumthang region encompasses four major valleys and Jakar town where you will stay for two nights is in the main valley called Chokhor. The other valleys are the Ura Valley which is to the east, Tang valley which is slightly more off the beaten track and the Chumey Valley. Arriving in Chumey your first port of call is the Nyimalung Monastery. Founded in 1938, the monastery is home to over 100 musically talented monks. From here you can walk down in 10 minutes to visit Prakhar Monastery a quaint village temple. Then rejoining your vehicle you will visit Zugney, a famous centre for weaving, where you will see the industry that is an integral part of Bhutanese society. It is said that every Bhutanese home is equipped with a loom for weaving and young girls are proficient in the craft before they reach the age of twenty.

You then drive up to the cluster of temples at Tharpaling - a sacred spot and place of meditation, founded by Geluwa Lonchen Rabchampa (1308-1363) during his self-exile from Tibet for ten years. Several picturesque monasteries dot the hillside above the Chumey Valley with views over Domkhar (Chumey) and Domkhar Summer Palace. After a picnic lunch, you start the 4 hour walk along an old trail back towards Chumey. The path starts out beneath craggy cliffs, from where it climbs fairly gently up to the ridge top and reaches the Shutre Sae Pass at 3,700m/12,139ft. Sited on the pass in a glass case is a statue of the founder of Tharpaling. From here the views are phenomenal - looking south you can see over the Chumey/Domkhar Valley with the Black Mountains in the distance. The other way you get fabulous and unexpected views over Jakar town with the airport runway and the dzong clearly seen far below. Beyond and further north, you can see towards the high mountains - perhaps even Mount Gangkar Punsum on a clear day. You descend from the pass in beautiful forest, nearly all downhill. On the higher reaches, you pass through pine, fir and rhododendron forest. Eventually you reach the road again at a huge area of prayer flags where you will meet your transport and head to your hotel in Jakar.

**Overnight: Ugyenling Hotel or Similar, Jakar (Meals: BLD)**

---

**Day 10: Bumthang Valley walk - 2-3 hours, with visits to temples and Jakar Dzong.**

---

Today you will be able to explore around Jakar town with a short, almost entirely level walk taking in some of the principle sights of the valley. From the hotel you either walk, or make the short drive to reach Jambay Lakhang. This is one of the country's oldest temples, built in the mid-7th Century. One interesting feature to look for is the set of three steps in the main temple. The first step, now hidden below floor level, is said to represent the time of the past or 'historical' Buddha. The second, very well worn, step represents the present Buddha, whilst the third step above, is said to represent the age of the future Buddha. The point at which the second step is worn down to ground level is held to be the time when the world as we currently know it will end.



From Jambay you take a farm track along the valley floor and walk for 30 minutes to reach Kurjey Lakhang, a series of three large temples. The oldest of the temples here houses a rock indented with the body shape of Guru Rinpoche, whilst the most recent dates back just 25 years and was built by the Queen Mother - Ashi Kesang Wangchuck. Descending from the temples you cross a suspension bridge and walk downstream for 45 minutes to Tamshing Lakhang, the most important Nyingma gumpa in the Kingdom, established in 1501 by Pemalingpa. Inside you can see a suit of chain-mail armour, which Buddhists believe will bring good fortune if you wear it and then walk around the inner temple three times. Your transport will meet you outside the gumpa and return you to your hotel, with perhaps a stop in Jakhar town-ship or a visit to the spectacular Jakar Dzong (Castle of the White Bird), so called because a white bird was supposed to have indicated the most auspicious place to build.

Later you will have some free time for relaxation or more exploration or shopping.

**Overnight: Ugyenling Hotel or Similar, Jakar (Meals: BLD)**

---

**Day 11: Fly to Paro. Drive over the the Cheli La, 3,990m/13,090ft, to Haa.**

---

This morning you will fly back to Paro where you will be met. Leaving Paro you then drive over the Cheli La Pass to Haa. The drive to the pass takes about 1½ hrs and on the way you will pay a visit to Kila Gumpa nunnery, a walk of around 30 - 40 minutes. The gumpa is a peaceful retreat for Buddhist nuns who dedicate their lives to spiritual fulfilment. Here the nuns live a life of contemplation and seclusion, with daily prayer and



spiritual practice. The temple itself is surrounded by numerous meditation huts, and many hidden caves lie inside the rocky cliffs. The gompa is surrounded by a lush forest dominated by tall firs. Sparkling mountain streams wind down the slopes, which are covered with a variety of wildflowers and plants. About 30 nuns live here, ranging in age from about 20 to 80 years. The community is one of the oldest of seven nunneries in Bhutan, and was initially established in the early 9th century as a meditation site. After being destroyed by fire, the temple was rebuilt and officially established in 1986.

Continuing up to the Cheli La pass, 3,990m/13,090ft, in clear weather you will have wonderful views of the snow-capped mountains to the west which mark the border with Tibet. You then descend on a long zig-zag road down into the Haa Valley. As you approach you will notice three almost identical conical hills in a line on the other side of the valley. These are believed by the locals to be the physical manifestations of three very important Buddhist saints. The left one is Manjushri (the god who holds the flaming sword which cuts the knot of ignorance), the middle one is Chenrizig (the Buddha of compassion of which the Dalai Lama is the human incarnation) and the right hand hill is Chana Dorji (this being the protector god of Bhutan). Collectively they are known as Rigsun (three hills). As you descend further you look down on the square yellow roof of the main monastery/fortress, Namgay Dzong. Spread around the dzong are the buildings of the Indian Army dating from the visit of President Nehru - the Indian army has a presence in Bhutan ostensibly to protect the kingdom from possible invasion from China. Although part of the dzong is used by the Indian Army the central tower of the Dzong is still used by the local people. The old town itself is just to the north-west and is really quite attractive with traditional two storey shops and a post office. There is a large school in Haa. In the afternoon you should have time for a little exploration in the Haa Valley, possibly visiting Talung Village and walking up to Yongto Gompa.

**Overnight: Lechuna Heritage Lodge or Similar, Haa (Meals: BLD)**

---

#### **Day 12: Explore the Haa Valley. Return to Paro.**

---

This morning you will further explore the Haa valley with some local walks before reversing yesterday's drive and returning to Paro over the Cheli La stopping at the temple of Dzong Drakha, a beautiful cliff temple spectacularly located on a broad ledge with vertical limestone cliff above and below. There are lovely views from here. You will then drop back down into Paro.

**Overnight: Hotel Olathang or Similar, Paro (Meals: BLD)**

---

#### **Day 13: A day in the Paro Valley. Visit Kyichu Lakhang. Walk to Taktsang Monastery, 3,110m/10,203ft - 4-5 hours.**

---

This morning you will visit the ancient temple of Kyichu Lakhang which was one of 108 temples built by Songtsen Gampo an important early Tibetan king, to pin down the Bon demon who was thought to hover over the whole of Tibet.

But the main activity today is the walk up to the famous Tiger's Nest, Taktsang Monastery - a fitting climax to your trip. The monastery is perched some 600m/2,000ft up on a cliff overlooking the valley and was said to be where the legendary Indian saint, Guru Padma Sambhava, flew from Tibet on the back of a tiger to defeat five demons, who were opposing the spread of Buddhism in Bhutan. It's a steep uphill walk through woods, of about 1½-2hrs, to reach a tea house (an ascent of 340m/1,115ft). Apart from offering welcome refreshment this tea house is one of the principle viewpoints of the monastery, and those who prefer not to climb any further can relax here whilst others continue on. If there is a particular religious gathering or VIP visit in progress, you will not be able to enter the monastery but the further half an hour's ascent is well worth it in any case, as it brings you to another viewpoint directly across from the monastery. If you are able to make a visit, the final section of the walk takes you from here steeply down approximately 100m/330ft into the gorge that separates you from the monastery and then climbs back up again to reach the monastery gate. You descend to the valley floor by your outward route back to where your vehicle will be waiting. The full walk to the monastery and back involves approximately 740m/2,428ft of ascent.



**Overnight: Hotel Olathang or Similar, Paro (Meals: BLD)**

---

**Day 14: Fly to Kathmandu. Transfer to hotel.**

---

Again a sensational take-off and scenic Himalayan flight past Chomolhari, Bhutan's second highest peak, past Kangchenjunga and Everest back to Kathmandu, where you transfer to the Dwarika's Hotel. The remainder of the day is at leisure for sightseeing and shopping.

**Overnight: Dwarika's Hotel, Kathmandu (Meals: B)**

---

**Day 15: At leisure in Kathmandu. Transfer to airport and depart for London.**

---

You will have much of the day free in Kathmandu to do some sightseeing or shopping or simply relax by the pool at your hotel. Later there will be a group transfer to the airport for your overnight flight back to London.

**Overnight: In flight (Meals: B)**

---

**Day 16: Arrive London.**

---

## Our grading system

---

Gentle Walking Bhutan is graded as a Gentle walking holiday, as described below.

### Gentle

Trips within this grade typically mix sightseeing with easy-paced half and/or full day walks. On these trips, walks will be on relatively low altitude trails, for a duration of around 4-6 hours. On all of our Gentle graded trips, some ascent and descent should be anticipated, and there may occasionally be a longer walking day. Holidays within this grade generally use hotels and comfortable lodges although a few do have some nights camping.

These holidays are suitable for people who enjoy easy-paced walks in the British countryside or exploring on foot rather than in a vehicle.

## Trip altitude

---

**Important** - please be aware that this trip involves travel at altitude. Whilst all our itineraries are carefully designed to optimise acclimatisation to high altitudes, participants on this trip are likely to experience some symptoms of being at altitude. The Dossier pack we provide when you book your holiday includes comprehensive advice on safe travel at altitude. If you require further information or advice on travel at altitude prior to booking please contact the office to speak to an experienced member of our team. Alternatively we recommend [www.medex.org.uk](http://www.medex.org.uk) as a good source of information.

## What the price includes

---

**Mountain Kingdoms** aims to offer the best value for money. We do not charge extra for meal packages or apply local charges and try to ensure that all the key elements of your holiday are included.

### What's included:

- ✓ An English speaking Bhutanese leader
- ✓ Economy class return air fares from the UK & UK Departure Tax (flight inclusive only)
- ✓ Single, timed group airport transfers for international flights on arrival and departure
- ✓ All internal flights and hotel/airport transfers
- ✓ Dwarika's 5\* hotel in Kathmandu, bed & breakfast on twin-share basis
- ✓ All road transport by private vehicles
- ✓ In Bhutan, good standard hotel accommodation in main towns and best available hotels in outlying towns, on full board, twin-share basis.
- ✓ Bhutan Visa
- ✓ Bhutan Departure Tax
- ✓ Sightseeing where specified
- ✓ Carbon offsetting with the Ecoan Tree Planting Project (for clients taking our flight inclusive option)
- ✓ A free Mountain Kingdoms Water-to-Go bottle

### Airport transfers

The cost of a transfer to/from the airport is included in the price of your holiday. This is a single group transfer which is arranged to coincide with the timings of the group flights. If you book your own flights which arrive/depart at different times to this, or we book flights at your request that have different timings, we will be happy to provide a quote for a separate transfer. Please contact us should you require any further information.

### What's not included:

- ✗ Travel insurance
- ✗ Visa fees for Nepal
- ✗ Lunch and evening meals in Kathmandu
- ✗ Optional trips
- ✗ Tips

### Water-to-Go Reusable Bottle Campaign

We have joined the campaign to help cut down on the use of plastics and, in particular, single-use water bottles. To do this we have teamed up with the revolutionary company, Water-to-Go who have developed a multi-use drinking bottle with a reusable filter that eliminates over 99.9% of all microbiological contaminants. This makes water from virtually any source safe to drink and significantly reduces the need for travellers to buy bottles of water wherever they are in the world.

Clients who are not given a free Mountain Kingdoms kit bag for their holiday (these are required for certain treks), will instead receive a free Mountain Kingdoms Water-to-Go bottle. These unique Water-to-Go bottles can also be purchased from us at a discounted rate.

For further information about our campaign visit [For further information about our campaign visit <https://www.mountainkingdoms.com/water-to-go-reusable-bottle-campaign>](https://www.mountainkingdoms.com/water-to-go-reusable-bottle-campaign).

## Your accommodation

---

We will endeavour to secure the hotels named in this itinerary but if our first choice of hotel is unavailable we will book a suitable alternative of a similar standard.

### Hotels in Bhutan

Please note that there is generally a shortage of hotel/lodge accommodation in Bhutan, especially outside Paro and Thimphu. Although we pre-book rooms as far in advance as possible, anything can happen and probably will, e.g. if the royal family suddenly has a visiting delegation, accommodation may be changed at short notice. Additionally, during peak seasons, it can sometimes be very difficult to secure not only the hotels/lodges we want, but also the single rooms we might need. In these circumstances singles may occasionally be asked to share but in such cases we refund any single room supplements that might apply. Given these conditions we will make every effort to secure any of the following hotels:



#### **Dwarika's Hotel, Kathmandu**

Dwarika's unique 5\* hotel is built in Nepalese style and features many architectural relics rescued from palaces and temples in the valley as well as Nepalese furniture, carvings and statues. The building has a palace-like atmosphere and you really feel as if you are stepping back into Nepal's history. Rooms are large and stylish and its elegant restaurant is one of the places to eat in Kathmandu. It also has a pleasant courtyard garden with swimming pool.



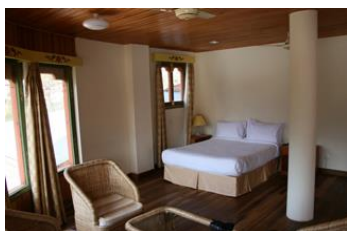
#### **Hotel Olathang or Similar, Paro**

Originally built for the coronation of the Bhutan's 4th King in 1974, this attractive hotel stands on a hill overlooking Paro town. Rooms in the main building are set around a peaceful courtyard and there are also a number of cottages dotted around the spacious grounds. Decoration is typically Bhutanese with stripped wooden floors and colourfully painted walls. Rooms are well-equipped and the hotel has its own spa, international restaurant and bar.



#### **Phuntso Pelri Hotel or Similar, Thimphu**

Despite its somewhat dark entrance hall, this new hotel is very well appointed, with custom made Bhutanese wooden furniture and good sized rooms. During busy periods, especially during festivals, we may use the Jomolhari Hotel, the Kisa Hotel, Hotel Gakyil, Hotel Osel or the Amodhara Hotel. These are amongst the best tourist class hotels in Thimphu.



#### **Zhingkhram Resort or Damchen Resort or Similar, Punakha**

Overlooking Punakha Dzong, and only opened in 2016, the Zhingkhram Resort is one of the best hotels in Punakha. The well-proportioned, stylish rooms come complete with free Wi-Fi, minibars and coffee/tea making facilities as well as balconies giving picture-perfect views of the dzong and the surrounding hills and countryside. Alternatively, the Damchen Resort is a newly renovated hotel sitting on the banks of the Puna Chhu River in the Punakha Valley. Rooms are clean, cosy and bright with good amenities, wooden furniture and nice decorative touches. The hotel is a short, easy walk from the small town of Khuruthang which has a selection of shops and restaurants.



#### **Hotel Gakiling or Yo Lo Koe Lodge or Similar, Gangtey**

These two lodges in Gangtey and have been recently updated. They offer relatively simple but comfortable accommodation, and are built in local style with cosy rooms using a lot of wood panelling and with attached bathrooms. Food is plentiful and good.





#### **Yangkhil Resort or Similar, Trongsa**

Set within walking distance of Trongsa town, Yangkhil Resort is a small, relaxed establishment with gardens and great views of Trongsa Dzong and the surrounding countryside.



#### **Ugyenling Hotel or Similar, Jakar**

Nestled in a picturesque setting facing the Bumthang valley and river, the Ugyenling has well-appointed rooms with a seating area warmed by a bukhari (wood burning stove). Rooms also offer tea/coffee making facilities and Wi-Fi as well as a sit-out balcony with views of the surrounding mountains and valleys. Set in a walled compound, the hotel has its own international restaurant, large bar and a traditional hot stone bath.



#### **Lechuna Heritage Lodge or Similar, Haa**

This lovely heritage lodge located in the picturesque village of Lechu, not far from Haa Village, is a renovated farmhouse. It has been beautifully restored, skillfully blending modern comforts with traditional style. The lodge has a cosy bar, common room and garden courtyard, and although its seven lovely rooms share bathrooms, they have been individually designed and offer very comfortable accommodation.

## **Meal arrangements**

---

Bed and Breakfast in Kathmandu and full board elsewhere.

## **Flight arrangements**

---

### **Flight inclusive from price**

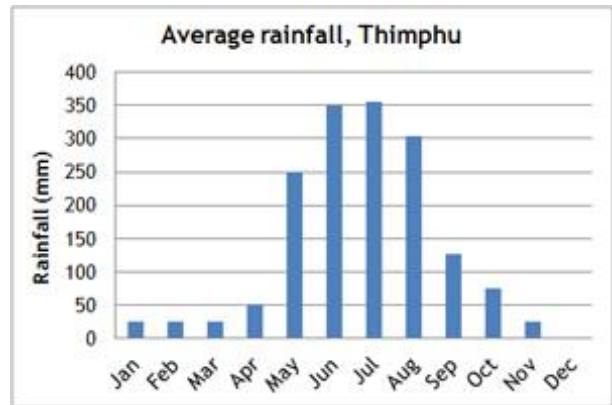
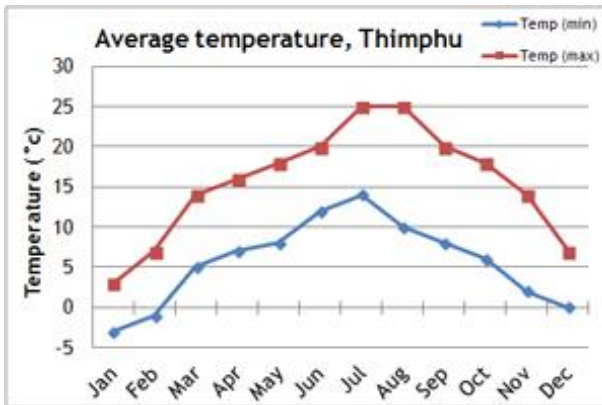
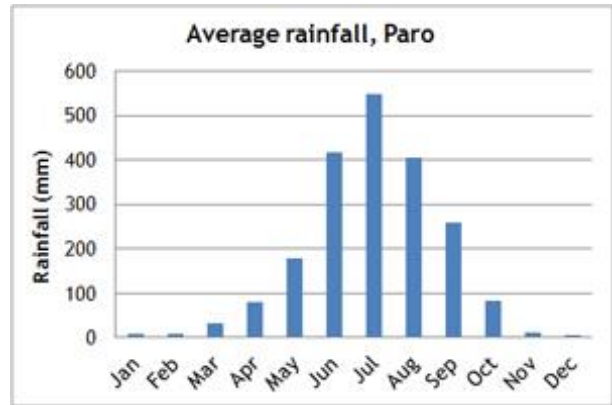
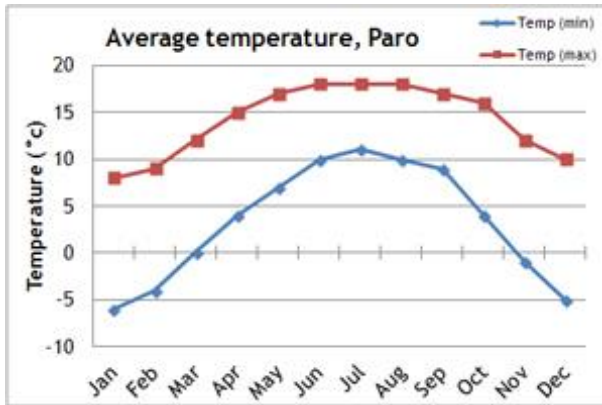
Our 'Flight inclusive from' price is based on the best fare available at the time of printing. As airfares change on a constant basis, this should be used only as a guide price. Rest assured that, at the time of booking, we will endeavour to get the best possible price for the flights you need. Remember, the earlier you book the greater your chances of securing the best fare.

Flight inclusive packages booked through Mountain Kingdoms are protected through our ATOL bonding scheme.

### **Flight upgrades and regional Airports**

Please call us on +44 (0)1453 844400 for flight options from regional UK airports, Business Class upgrades, alternative airlines and stopovers. Please also check our website for the most up to date flight inclusive 'from' prices.

## Climate information



## Further information

When we receive your booking, we send you a full Trip Dossier which contains details of any visas and vaccinations required, a suggested gear and clothing list and lots of useful information. If you do have queries at this initial stage do call us on 01453 844400 and we will be pleased to offer advice.

## The nature of adventure travel

Every effort will be made to keep to this itinerary but we cannot guarantee that things may not change, either before you travel or while you are away. By its very nature, adventure travel involves an element of the unexpected, particularly in more remote areas. A variety of factors such as adverse weather conditions, changes to local schedules and difficulties with transportation can all contribute to the need to make changes to the itinerary, often at the very last minute. Our Operations Manager and your Trip Leader will make every effort to maintain the integrity of the original itinerary and minimise the impact of any changes, but an easy-going and flexible nature is a real asset! Please note that all timings and distances given are approximate.

# Extensions

---

## Extending your holiday

If you would like additional inspiration on how or where to extend your holiday please call us on 01453 844400. Alternatively, you can download a range of extension information sheets on our website, at [www.mountainkingdoms.com](http://www.mountainkingdoms.com).



### Hotel upgrades and extra nights in Bhutan

If you would like to upgrade your hotel during your holiday take a look at our selection of luxury properties in Bhutan such as Uma Paro or the Taj Tashi in Thimphu, you can download a leaflet from our website detailing all hotel options. We can also add additional nights in Bhutan at the start or end of your trip.



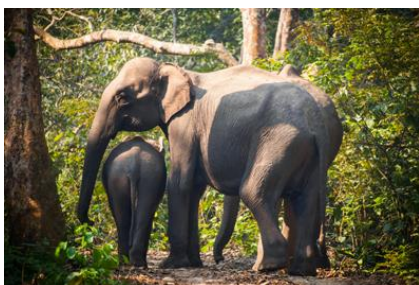
### Additional accommodation in Nepal

If you would like to extend your stay in Nepal, you can add extra nights at your group tour accommodation or choose from our range of distinctive properties in Pokhara and the Kathmandu area. We can offer luxury resorts, heritage hotels, tranquil lodges and characterful cottages. Our selection includes Dwarika's Resort at Dhulikhel, Pavilions Himalaya at Pokhara, Tiger Mountain Pokhara Lodge and Shivapuri Heights Cottage. Individual extension leaflets for all these options can be downloaded from our website or requested from our office.



### Kathmandu Valley sightseeing excursions

We can arrange half day or full day sightseeing tours taking you to the key cultural attractions of central Kathmandu or the Kathmandu Valley including the World Heritage Sites of Bhaktapur and Patan. Your tour will be led by an English speaking guide and you will have a private vehicle and driver.



### Wildlife extensions in Nepal - Chitwan, Bardia & Koshi Tappu

Visit Chitwan or Bardia National Parks home to a rich variety of birds and animals including elephant, rhinos, leopard and Bengal tiger. Stay in a comfortable lodge and enjoy a range of wildlife viewing activities. Alternatively visit the renowned Koshi Tappu Wildlife Reserve - one of the finest birdwatching and wildlife areas in all Asia.



### Royal Manas National Park, Bhutan

Extend your stay in Bhutan with an extension to the Royal Manas National park, a wonderful birder's paradise close to the Indian border. Our extension package gives you three full days to explore the park and surrounding area, and you will be accompanied throughout by a specialist bird and wildlife guide. We also include all meals, private transport to/from Paro, and hotel accommodation close to the park.

### Bumdra Trek, Bhutan

Add an overnight trek to your Bhutan holiday. Follow a trail from Paro to the Bumdra Monastery, high above the Paro Valley then descend to Taktsang Monastery by a little trekked path. Enjoy high mountain views and spend a night camping below beautiful Bumdra Monastery. The fully supported trek includes a guide, trek crew, all camping equipment.

## Why book this holiday with Mountain Kingdoms?

---

- This well-paced holiday offers an excellent balance between sightseeing, walking and travel as well as time to relax and explore at leisure.
- Our itinerary offers an excellent and varied programme of walks and stays in comfortable hotels in Bhutan.
- We include time at a colourful festival - a highlight of any holiday in Bhutan.
- Your tour will be led by professional, English-speaking guides who will be delighted to share their expert knowledge of the history, culture and nature of their home country.
- While in Kathmandu you will stay at award winning Dwarika's Hotel, one of the best hotels in Kathmandu and a unique heritage property.
- We have been pioneering holidays in Bhutan for over 30 years. Our M.D. Steve Berry, is one of the leading authorities on Bhutan in the travel industry and has written two books about his experiences in the Thunder Dragon Kingdom.
- Many members of the Mountain Kingdoms team have travelled extensively in Bhutan. If you have any questions about any aspect of this holiday please don't hesitate to give us a call on 01453 844400 or email [info@mountainkingdoms.com](mailto:info@mountainkingdoms.com).
- Our maximum group size is 12 for this trip. This provides for a genuine small group travel experience and helps reduce the negative aspects often associated with larger groups.
- We offer a flexible service and can extend your holiday with extra hotel nights, upgrades and exciting activities.
- As part of our commitment to 'Tourism Declares a Climate Emergency', we will be carbon-offsetting all international flights booked through us by donating funds to the Ecoan Tree Planting Project in Peru.
- If you wish to fly with a specific airline, from a regional UK airport or on alternative dates to the main group we would be happy to arrange this for you. Please contact our Flights team for flight options, quotes and further information.

If we've tempted you to take your next holiday with us, we advise you to check availability and you can do this via our website: [www.mountainkingdoms.com](http://www.mountainkingdoms.com) or by calling the team on +44 (0)1453 844400. Bookings can be made online, by phone or by completing a booking form and returning it to us. We can also provisionally hold places if you need time to consider your options.

## What our clients say

---





*This was a wonderful trip and an experience I will remember for a long time, particularly the climb up to the Tiger's Nest Monastery! We were very lucky to have Tshering as our tour leader, a very experienced guide and a really nice man. Everything went smoothly, thanks to the hard work he put in behind the scenes. Thanks to Mountain Kingdoms for offering such a good trip.*

*-Mrs L T, Oxfordshire*

*Personally the trip exceeded expectations in terms of accommodation, comfort, food etc and every day was just excellent. Bhutan has been a dream for a long time, and I was just in awe of the scenery, the wonderful people and all the special experiences.*

*-Mrs P, Devon*



*This trip was well structured to provide a very interesting look at a beautiful country. The balance of culture, hiking and being in nature, culminating in the Paro festival and ascending the Tiger's Nest monastery worked well. The walks were challenging but provided the perfect build up to Tiger's Nest.*

*Mrs P H, London*



*A fantastic and memorable experience which exceeded all my expectations, superbly organised with excellent guides and drivers. A holiday of a lifetime, thank you all so very much.*

*-Mr R G, Shropshire*

*Absolutely perfect introduction to Bhutan with a mix of walks, guided tours of temples and dzongs, and a festival. Hotels were of high standard of comfort. Guide was knowledgeable, personable and really made the trip. Even the driving was a fascinating experience.*

*-Mr R A, Dorset*

*Bhutan is a magical experience - it surpassed our expectations. Excellent organisation. Superb attention to detail. This is the third time I have travelled with Mountain Kingdoms and every time the trips have been excellent. Mountain Kingdoms are our first choice of company for this type of trip.*

*-Mr & Mrs S, West Sussex*

# Mountain Kingdoms - distinctly different

---

## **Truly independent**

In an age where many so-called 'independent' travel companies have in fact been bought out by multi-national giants, we remain fiercely independent with all the benefits this offers our clients.

## **Value for money prices with an emphasis on quality**

We are not in the business of cutting our itineraries and services to the bone to offer eye-catching cheap prices. We use some of the best airlines, and typically 3 or 4 star hotels in cities. We include the majority of meals and private transport for road travel. We use excellent equipment and appoint well-trained staff and leaders. Last year, over 98% of our clients rated their Mountain Kingdoms holiday as 'excellent' or 'good'. We are members of AITO and bound by their quality charter.

## **Complete financial security**

You can book with us confident that your holiday has full financial protection. Flight inclusive holidays are financially protected by the Civil Aviation Authority under ATOL licence number 2973 and 'Land Only' holidays are covered by a bond secured with ABTOT.

## **No Surcharge Guarantee**

Your peace of mind is important to us so we have a No Surcharge Guarantee on all Land Only and Flight Inclusive bookings. This means that there will be no change to the price of your holiday once we have confirmed your booking, regardless of fluctuations in exchange rates or fuel prices.

## **Award winning Responsible Tourism**

We feel strongly that all our holidays should benefit local communities, protect the environment and respect local traditions, religion and heritage. You can read more about the charities we support and our Responsible Tourism commitments and initiatives on the following page or at [www.mountainkingdoms.com](http://www.mountainkingdoms.com).

## **Genuine small group travel**

Almost all of our holidays have a maximum group size of just 12, plus leader. This provides more contact with your leader, readier access to off-the-beaten-path areas, greater interaction with local communities and a reduced environmental impact.

## **Loyalty Discount**

If you have previously travelled with us we recognise your loyalty with a discount on future trips.

## **Booking your holiday - it couldn't be easier**

Once you've chosen your Mountain Kingdoms holiday you can book online, call the office or complete and post a booking form which can be found in our brochure or downloaded from our website. If you would like to hold a place on one of our trips, whilst you make up your mind, please give us a call to make a provisional booking. This is a no-obligation, no-cost booking and we will hold your place until space comes under pressure or we need your decision.

## **Comprehensive information**

When we receive your booking we send you a full trip dossier which contains details of visas and vaccinations required, a suggested gear and clothing list and lots of useful information. In fact, everything you need to know to give you peace of mind and allow you to prepare for your trip of a lifetime.



## RESPONSIBLE TOURISM STATEMENT CLIMATE EMERGENCY PLAN



For over 33 years, Mountain Kingdoms has been offering people the chance to visit amazing places on this extraordinary planet. We now offer trips to all corners of the world, but we are conscious that inevitably our holidays have a detrimental impact on the world around us, and we want to do all we can to reduce our carbon emissions. We are a signatory to Tourism Declares a Climate Emergency, along with a growing number of like-minded, reputable tour operators. For more information, please visit [www.tourismdeclares.com](http://www.tourismdeclares.com)

From 2020 onwards, we will be focusing on how we can reduce the carbon emissions that our holidays produce, and how to counterbalance this carbon by supporting carbon offset measures. Here are some of our current and future plans to minimise the impact of our business as a whole:

### **Carbon Offsetting**

#### **Already doing:**

- ✓ We have been offsetting carbon since 2007, but will be increasing our donations to the [Ecoan tree planting project](#) in Peru this year. This is with a trusted partner where the funds go directly to a project where the community plants trees on its own land.

#### **Will do:**

- ✓ We are working on making our carbon offsetting more accurate and targeted.
- ✓ In future, we will add to that a further estimate for carbon produced by hotels, local road travel, trains and internal flights to arrive at a carbon offset sum for each trip we operate.
- ✓ Carbon offsetting will be included in our holiday prices. For our Flight Inclusive holidays it will include the international flight and any emissions produced by inland travel and accommodation. Our Land Only prices will include the cost of offsetting emissions caused by inland travel and accommodation.

### **Reducing Carbon Emissions**

#### **Already doing:**

- ✓ We already offer the majority of our customers a free filtered water bottle which means they can instantly cut down on their single-use plastic consumption. This will be an ongoing project.
- ✓ We already predominantly use locally owned hotels, but will continue to ensure that, where possible, we use these rather than multinational chains.
- ✓ We have joined the Tourism Declares a Climate Emergency initiative to stand alongside like-minded travel companies, to work together to initiate best practices to make tourism as sustainable as possible.

#### **Will do:**

- ✓ We will re-evaluate our flights to make sure we are using the most fuel efficient airlines with the youngest fleets and, where possible, direct flights for each trip.
- ✓ We will stop offering unnecessary optional flights – for example our Everest sightseeing trip.
- ✓ We will eliminate unnecessary staff flights wherever possible.
- ✓ We will look at minimising internal flights.
- ✓ We will be asking all our worldwide agents and suppliers to look at their own carbon footprint and encourage them to reduce it.
- ✓ We will promote our more low impact trips to give customers an informed choice.

As part of our wider commitment to Responsible Tourism, we will continue to support a number of charities with whom we have had a long standing relationship over many years. These include: Shiva Charity in Nepal (Ginette Harrison School), Simien Mountains Mobile Medical Service and Porter Welfare, as well as setting aside a sum for emergency disaster relief should the need arise.



